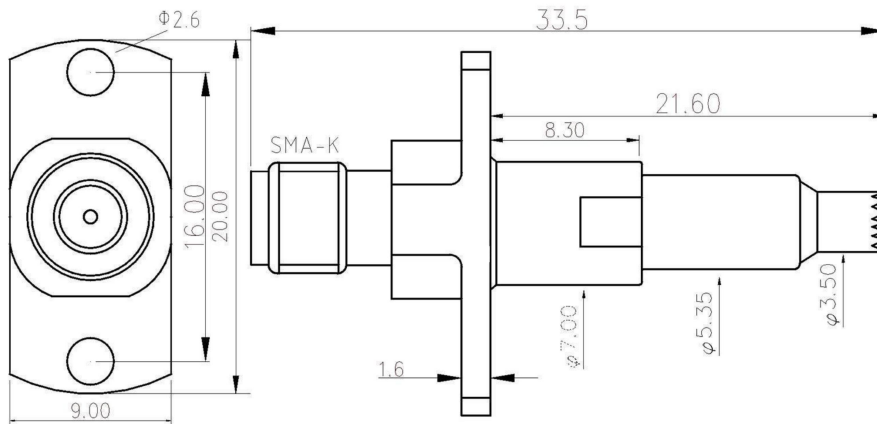


XQY-SMA-TN1035-Y

精密高频测试探针

precision High frequency test probe

参数/Parameters	规格/Specifications
频率范围 Frequency Range	DC-6 GHz
插入损耗 Insertion loss	0.15dB max. (DC-2GHz)
	0.20dB max. (2GHz-3GHz)
	0.40dB max. (3GHz-6GHz)
电压驻波比 Voltage VSWR	1.2max. (DC-3GHz)
	1.5max. (3GHz-6GHz)
接触电阻 Contact Resistance	内导体之间 Between Inner conductors $\leq 3 \text{ m}\Omega$
	外导体之间 Between external conductor $\leq 2 \text{ m}\Omega$
	绝缘电阻 Insulation Resistance $\geq 1000 \text{ M}\Omega$
阻抗 Impedance	50 Ohms
材料 Material	插针 Pin: 铍青铜 镀金 Beryllium Bronze gold plating
	绝缘层 Insulating layer: 聚四氟乙烯 PTFE
	外壳 Shell: 黄铜 镀金 Brass gold plating
	接头 Connector: 黄铜 镀镍 nickel plated brass
外形尺寸 Outline Dimensions	33.5*20*9 (mm)
工作温度 Operation Temperature	-40°C ~ +85°C
耐用性 Durability	≥ 50000 times 次



注: 尺寸(mm/[英寸]), 一般公差(± 0.05)

Note: Dimensions (mm / [inch]), General tolerance (± 0.05)

适配焊盘规格/Adapter pad specification:

测试焊盘规格 Test pad specification	焊盘尺寸范围 Pad size range		
 <p>测试点直径 GND 内径 GND 外径</p>	<p>测试点直径 Test point diameter</p>	<p>GND 内径 GND internal diameter</p>	<p>GND 外径 GND external diameter</p>
	<p>$\geq 0.9\text{mm}$</p>	<p>$\geq 2.3\text{mm}$</p>	<p>$\geq 3.9\text{mm}$</p>
	<p>$\leq 1.2\text{mm}$</p>	<p>$\leq 2.9\text{mm}$</p>	<p>$\leq 4.3\text{mm}$</p>